

Write your name here

Surname

Other names

Pearson
Edexcel GCE

Centre Number

--	--	--	--	--

Candidate Number

--	--	--	--	--

Core Mathematics C1

Advanced Subsidiary



Wednesday 17 May 2017 – Morning
Time: 1 hour 30 minutes

Paper Reference
6663/01

You must have:
Mathematical Formulae and Statistical Tables (Pink)

Total Marks

Calculators may NOT be used in this examination.

Instructions

- Use **black** ink or ball-point pen.
- If pencil is used for diagrams/sketches/graphs it must be dark (HB or B). Coloured pencils and highlighter pens must not be used.
- **Fill in the boxes** at the top of this page with your name, centre number and candidate number.
- Answer **all** questions and ensure that your answers to parts of questions are clearly labelled.
- Answer the questions in the spaces provided
– *there may be more space than you need.*
- You should show sufficient working to make your methods clear. Answers without working may not gain full credit.

Information

- The total mark for this paper is 75.
- The marks for **each** question are shown in brackets
– *use this as a guide as to how much time to spend on each question.*

Advice

- Read each question carefully before you start to answer it.
- Try to answer every question.
- Check your answers if you have time at the end.

Turn over ►

P48760A

©2017 Pearson Education Ltd.

1/1/1/1/



Pearson

2. Given

$$y = \sqrt{x} + \frac{4}{\sqrt{x}} + 4, \quad x > 0$$

find the value of $\frac{dy}{dx}$ when $x = 8$, writing your answer in the form $a\sqrt{2}$, where a is a rational number.

(5)

DO NOT WRITE IN THIS AREA

DO NOT WRITE IN THIS AREA

DO NOT WRITE IN THIS AREA



9. (a) On separate axes sketch the graphs of

(i) $y = -3x + c$, where c is a positive constant,

(ii) $y = \frac{1}{x} + 5$

On each sketch show the coordinates of any point at which the graph crosses the y -axis and the equation of any horizontal asymptote.

(4)

Given that $y = -3x + c$, where c is a positive constant, meets the curve $y = \frac{1}{x} + 5$ at two distinct points,

(b) show that $(5 - c)^2 > 12$

(3)

(c) Hence find the range of possible values for c .

(4)

DO NOT WRITE IN THIS AREA

DO NOT WRITE IN THIS AREA

DO NOT WRITE IN THIS AREA



10.

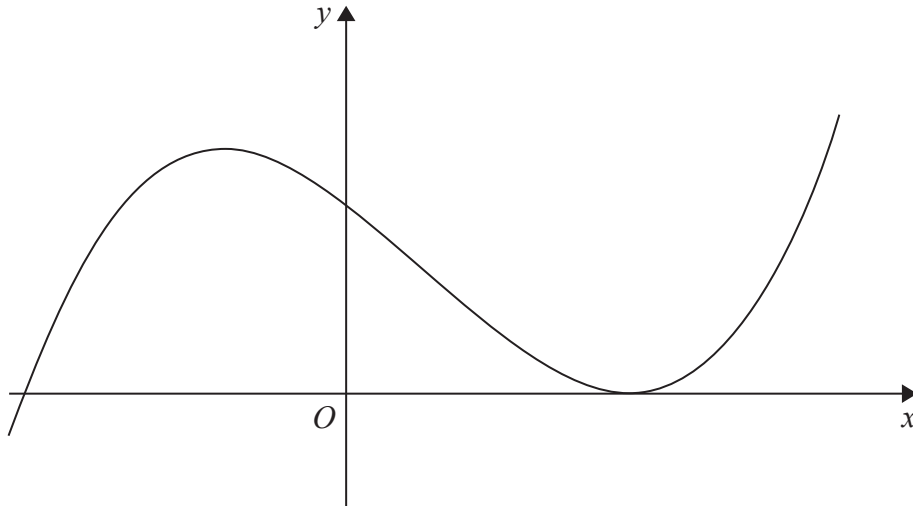


Figure 2

Figure 2 shows a sketch of part of the curve $y = f(x)$, $x \in \mathbb{R}$, where

$$f(x) = (2x - 5)^2(x + 3)$$

(a) Given that

- (i) the curve with equation $y = f(x) - k$, $x \in \mathbb{R}$, passes through the origin, find the value of the constant k ,
- (ii) the curve with equation $y = f(x + c)$, $x \in \mathbb{R}$, has a minimum point at the origin, find the value of the constant c .

(3)

(b) Show that $f'(x) = 12x^2 - 16x - 35$

(3)

Points A and B are distinct points that lie on the curve $y = f(x)$.

The gradient of the curve at A is equal to the gradient of the curve at B .

Given that point A has x coordinate 3

(c) find the x coordinate of point B .

(5)

DO NOT WRITE IN THIS AREA

DO NOT WRITE IN THIS AREA

DO NOT WRITE IN THIS AREA



